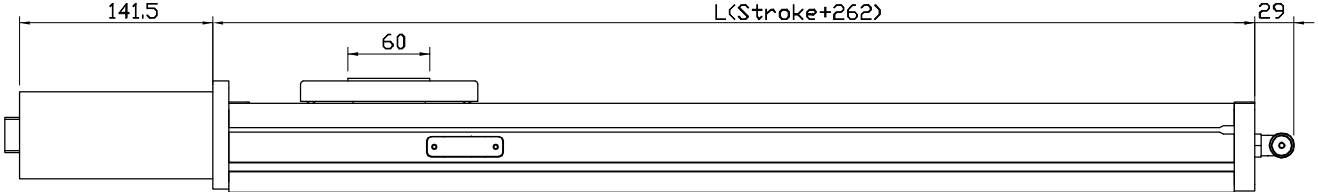
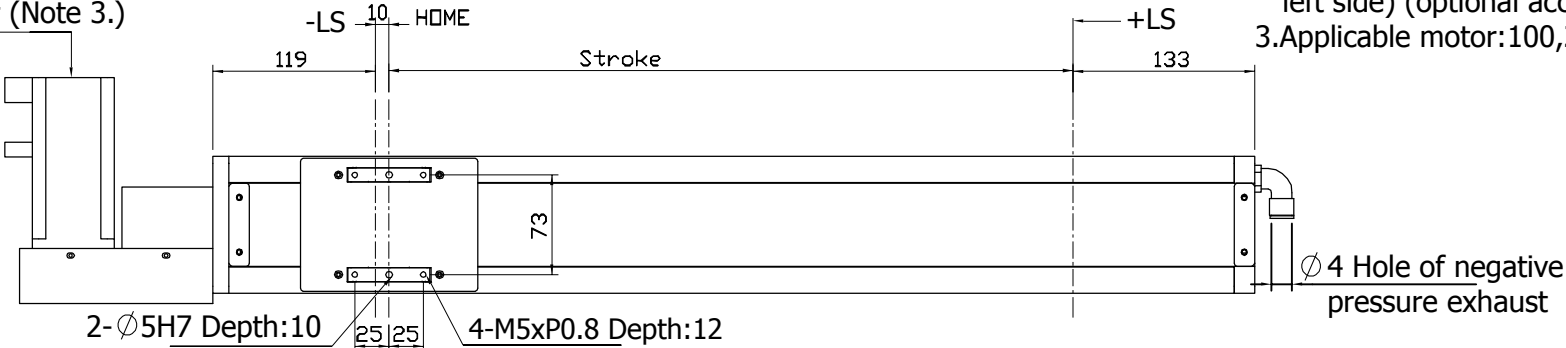


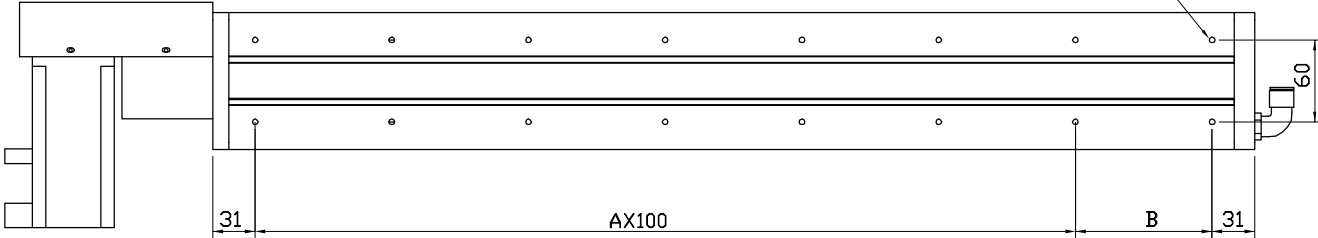
# <JDTNS-100> Specification

- Note:1.The dimension of motor can e BL or BR  
 2.We install the sensor outside.(right or left side) (optional accessory)  
 3.Applicable motor:100,200W,400W.

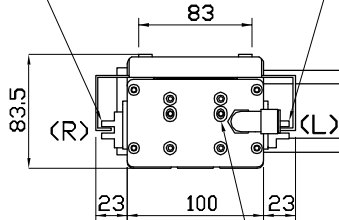
200W motor (Note 3.)



N-M5xP0.8 Depth:10  
 (The mounting hole)



The outer sensor. (Note 2.)



Screw for adjustment of belt tension x2.

SENSOR Operation:

- 1.+LS
- 2.HOME
- 3.-LS

Unit:mm

Stroke	100	200	300	400	500	600	700	800	900	1000	1100	1200
L	362	462	562	662	762	862	962	1062	1162	1262	1362	1462
A	2	3	4	5	6	7	8	9	10	11	12	13
B	100	100	100	100	100	100	100	100	100	100	100	100
N	8	10	12	14	16	18	20	22	24	26	28	30
Weight(kg)	5.9	6.9	7.9	8.9	9.9	10.9	11.9	12.9	13.9	14.9	15.9	16.9